



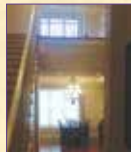
Call Nancy J. Trapp 417-616-4420



Member of Greater Springfield Board of Realtors

Branson Landing RESIDENTIAL CONDOMINIUM

10403 BRANSON LANDING BLVD.



3 full bedrooms, huge walk-in closet, 3 full bathrooms with Jacuzzi tubs, tiled showers, 2 story with gorgeous staircase. Includes a Butler's kitchen along with formal kitchen. Over 2100 Sq. Ft. of living and 2 car parking spaces in garage. Elevator access to both floors.

Priced at \$449,900

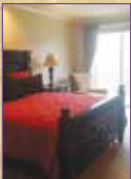


Table Rock Lakefront

107 TIMBER RIDGE, KIMBERLING CITY



Walk out your back door to your dock!
Located in Forest Park, this lake home is furnished and waiting for your family to start living the dream! Walk in the front door to vaulted ceilings and beautiful windows.

Priced at \$325,000

Slip available for additional \$